



Howletts Road, SE24

2 bedroom flat to let

£450 Per Week

Part furnished

Property Details

A beautifully bright and spacious two double bedroom flat, ideally located just a stone's throw from Brockwell Park. This charming middle-floor property is within walking distance of the park's wonderful green spaces.

The flat comprises a spacious open-plan kitchen and living area featuring a character fireplace, hardwood flooring, and large sash windows that flood the room with natural light. The fully integrated kitchen includes plenty of worktops. There are two well-proportioned double bedrooms and a modern bathroom.

Excellent transport links are close by, with three nearby train stations providing access to London Bridge in under fifteen minutes.

Please note: photos are of a similar flat within the development. Updated images coming soon.

Features

- Two bedroom
- Open plan
- Spacious
- Prime Location
- Close to Brockwell Park
- Close to Herne Hill Station

Council tax band C **EPC rating (0)**



Howletts Road, SE24



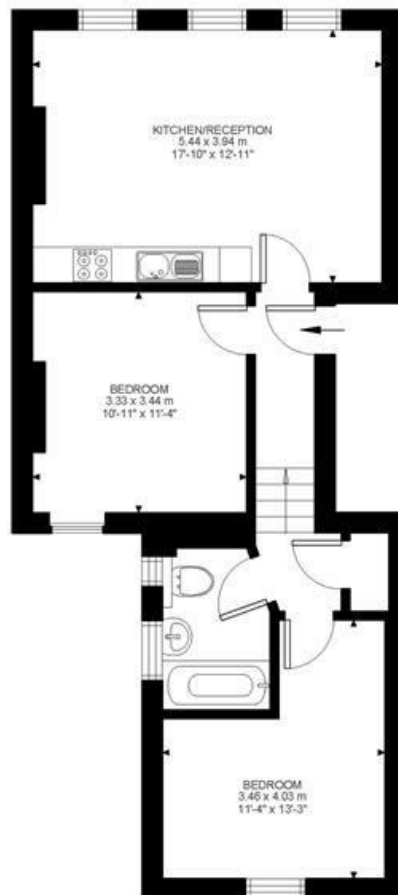
2 Bed flat

Approx internal area:

619 sqft 57 sqm

While we do try our very best, floor plans are produced as a guide only and we take no responsibility for the precise accuracy with which any property is represented

Howletts Road



First Floor



Howletts Road, SE24

